

PHAETON®

2015



TIFFIN

MOTORHOMES

2015 PHAETON

Designed to stir all five senses. Six, if you count your sense of adventure.

One of the nation's best-selling diesel pushers, the Phaeton by Tiffin Motorhomes is the perfect blend of luxury and practicality, giving you the most value of any RV out there. Every square inch is engineered to deliver the most comfortable travel experience you'll ever have on the road. New for 2015 is the Phaeton's sleek, sporty profile, courtesy of redesigned front and rear caps. So, no matter which way you're going, your 2015 Phaeton is sure to turn heads.



FOR ADDITIONAL CONTENT, download the free LAYAR app on your tablet or smartphone, and scan photos showing the LAYAR logo.



SHOWN 40 AH FLOOR PLAN WITH RUSTIC CANYON EXTERIOR



RIDE

A moving experience. Even before it moves.

Only one word can describe the feeling of driving the 2015 Phaeton – euphoria. Powerful, yet easy to control, this coach rewards you with every mile, supported by a top-rated Freightliner® chassis with a Cummins engine. Perfectly balanced steering, six-speed electronic transmission, and air ride suspension capably conquer any road surface or weather condition that comes your way.

COMMAND

With just a touch of a button, everything from the Ultra Leather captain's chair to pedals and mirrors adjusts to your exact specifications. An LED computer co-pilot performs instant system checks, monitoring engine and transmission temperatures, oil pressure, and brake fluid.

PERFORMANCE

The industry's most acclaimed diesel engineer, Cummins is Tiffin's choice for engines that are able to accelerate at any speed and climb steep grades, even when towing 10,000 lb. All coaches feature the spirited 380 horsepower Cummins diesel engine, except the 42' model equipped with a 450 horsepower engine.

NAVIGATION

With an optional state-of-the-art navigation system, the Phaeton ensures peace of mind no matter how far off the beaten path you go. For optimal safety, the coach is equipped with a color rear vision monitor system. Side-view cameras, activated by turn signals, allow traffic to be viewed from multiple angles.

SHOWN 40 AH FLOOR PLAN WITH ENGLISH CHESTNUT CABINETS AND ENGLISH TOFFEE INTERIOR



ROTATING CAPTAIN'S CHAIRS



PASSENGER COMPUTER TRAY



HIGH-DEFINITION REAR/SIDE MONITOR

FLOOR PLANS

With so many thoughtful features, our floor plans are now called MORE plans.

The design of every Tiffin floor plan must meet four essential criteria:

- Maximum space.
- Optimal organization.
- Relaxation plus.
- Elegant atmosphere.

Together, they add up to offer your family the most comfortable and convenient layout for life on the road.

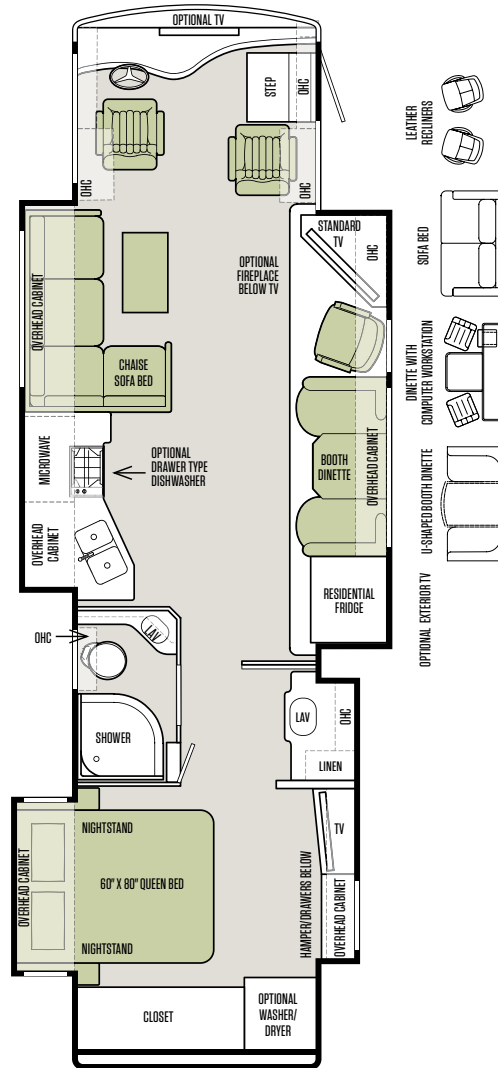
TIFFIN INNOVATION: EXTRAORDINAIRE™ AC SYSTEM

The interior ambiance in your Tiffin coach is enhanced by a state-of-the-art heating and cooling method, developed by Tiffin engineers for exclusive use in our luxury coaches. Modeled on residential-style systems, it uses adjustable registers and return vents placed the length of the ceiling to keep the airflow moving in a circular pattern to maintain your desired interior temperature. Whisper quiet and incredibly efficient, it easily lives up to its name — Extraordinaire.

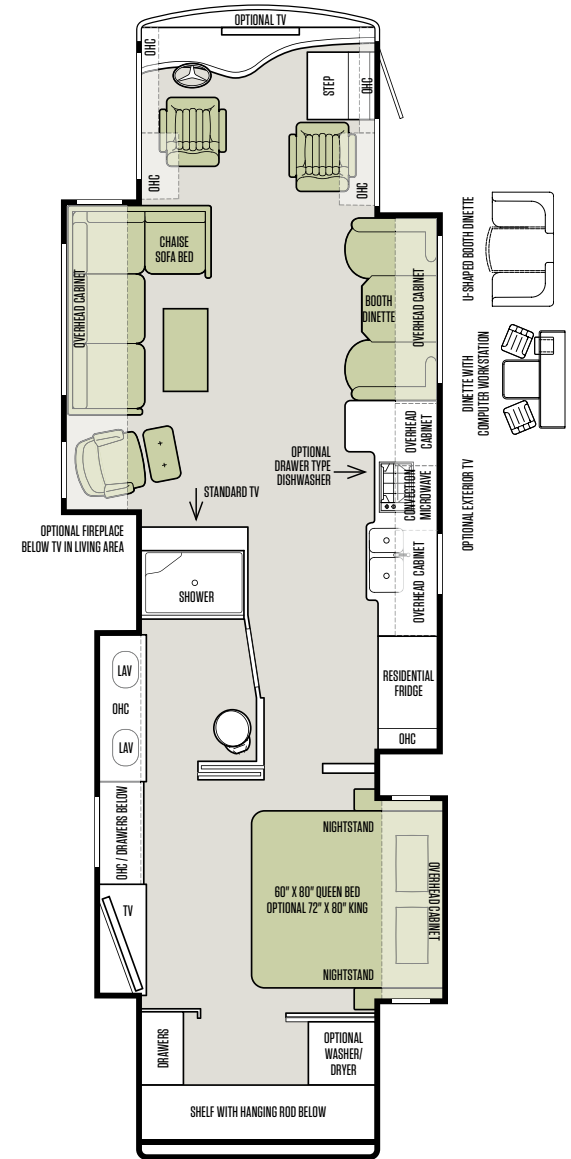


TAKE A CLOSER LOOK AT OUR INNOVATIVE AC SYSTEM

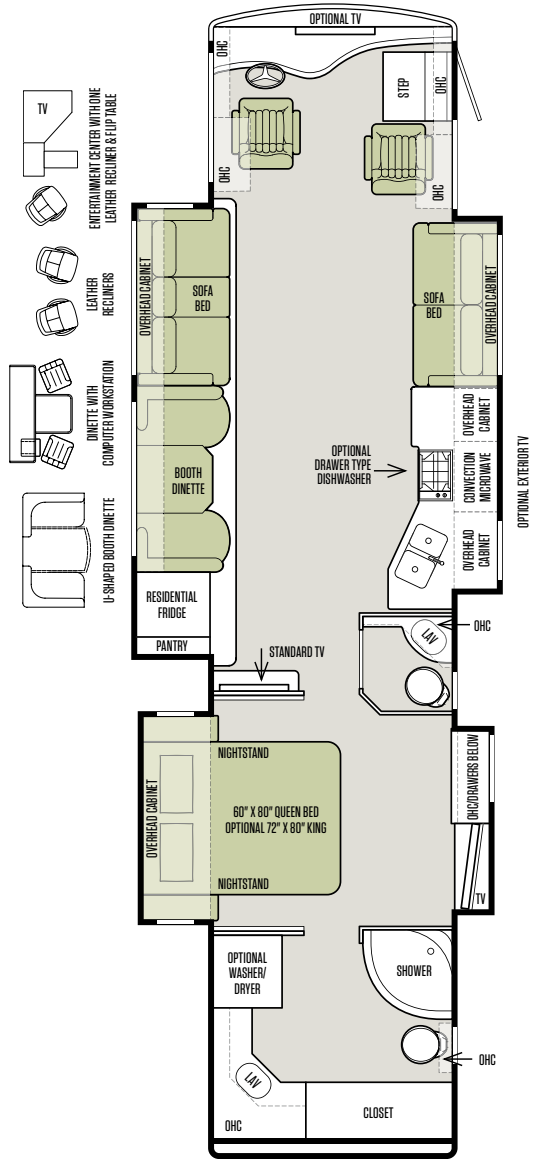
36 GH



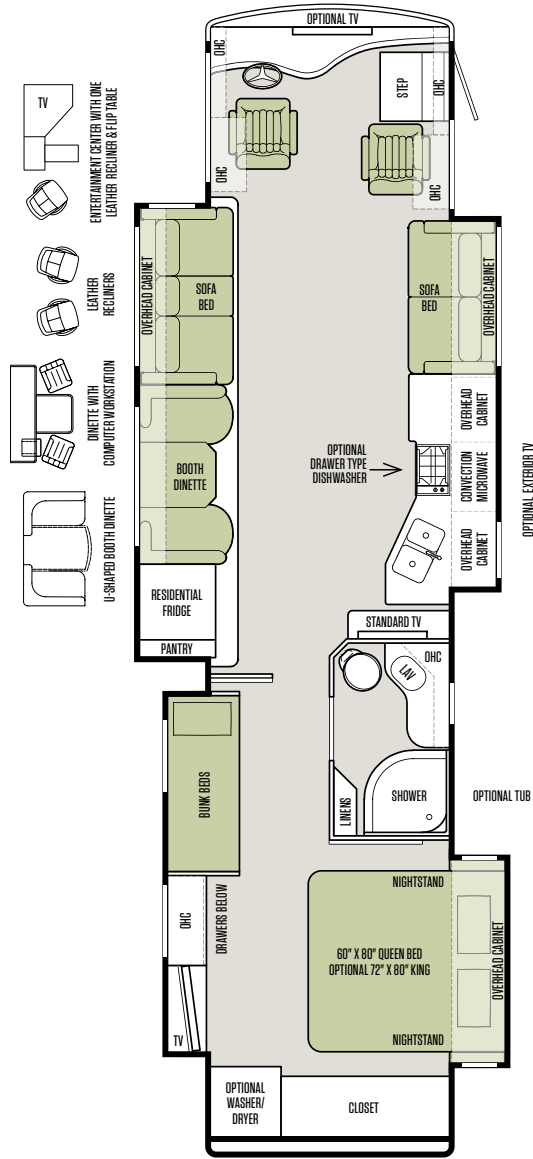
40 AH



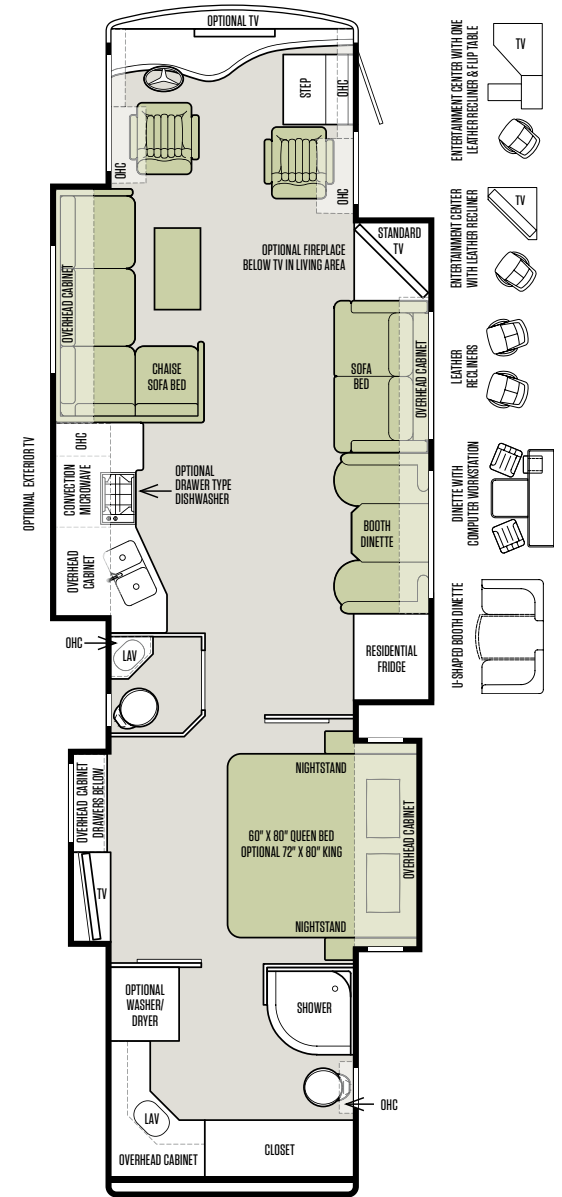
40 QBH



40 QKH



42 LH





EURO RECLINER



LIVING AREA TV



FIREPLACE

LIVE

Square footage that's anything but square.

Few coaches measure up to the luxurious living quarters of the 2015 Phaeton. Every floor plan is designed to address the everyday needs of traveling families in the most sumptuous way possible. Elegant interiors spoil you with upscale amenities and decorative appointments, while roomy slide-outs and airy 7' ceilings accentuate a sense of spaciousness.

ELEGANCE

Enjoy quality that suits your style of living. High-end porcelain tile flooring casts a refined gleam the entire length of the coach. For all the light you need — without the extra heat — energy efficient LED lighting comes standard.

COMFORT

Handcrafted hardwood cabinetry lends beautiful warmth to living areas, complementing the tones and textures of designer textiles. Three color palettes are offered, each in neutral tones to disguise scuffmarks, stains, and pet dander.

SHOWN 40 AH FLOOR PLAN WITH ENGLISH CHESTNUT CABINETS AND ENGLISH TOFFEE INTERIOR





TAKE A CLOSER LOOK AT THE PHAETON COMPLETE 360 INTERIORS





DINE

It's easy to create a masterpiece when you're cooking in one.

The Phaeton's well-designed kitchen offers all the ingredients for culinary success. Enjoy the easy-to-clean, upscale allure of stainless steel appliances, a residential fridge, a 3-burner cooktop, and a microwave/convection oven. Solid surface countertops are deep and wide enough to prep just about anything on the menu, with Tiffin's exclusive Expand-an-island on hand when more space is needed.

KITCHEN HELPERS

Organization is a cook's best friend, and this kitchen delivers. Two 110 V GFCI-protected outlets are perfectly placed for easy use. A rattle-resistant carpeted cabinet keeps pots and pans contained while a hidden compartment keeps trash neatly hidden.

HOUSEHOLD MAINTENANCE

Cleanup is hassle-free with an optional central vacuum system, optional dishwasher, and optional onboard laundry center. Countertops, tile flooring, and carpet in slide-outs are specially treated for stain resistance for long-lasting attractiveness.



TIFFIN STORE-IT-ALL™ ASSURANCE

The 2015 Phaeton offers Store-It-All Assurance, Tiffin's desire to exceed competitors in storage capacity, a needed commodity in any kitchen. Deeper than industry standards, our cabinets feature adjustable shelving and sliding compartments for better organization. Drawers are outfitted with full extension metal slides to pull completely open. All kitchen cabinetry is handcrafted from solid unblemished hardwood and features Tiffin's trademark fit-and-finish detailing.

SHOWN 40 AH FLOOR PLAN WITH ENGLISH CHESTNUT CABINETS AND ENGLISH TOFFEE INTERIOR



COOKTOP



EXPAND-AN-ISLAND



DISHWASHER



TV IN BEDROOM



BATHROOM



MOLDED FIBERGLASS SHOWER



STACKED WASHER/DRYER

REST

Share the road. Keep luxury all to yourself.

After a day on the road, come home to a cozy place just for you. Privacy and comfort abound in the Phaeton's spacious master suite designed for peace and quiet. A hotel-quality queen innerspring mattress offers a restful landing place, or upgrade to a king bed for more elbowroom. With a surround sound system, TV, and DVD player, you can relax like never before.

ACCOMMODATIONS

The Phaeton can comfortably host up to six overnight guests. Families with kids will love the bunk bed option, offering each child a private retreat. If not used for sleeping, bunk areas convert into a wardrobe for extra storage space.

BATHING

A private bathroom may be a traveler's ultimate luxury. Choose between a standard shower and optional tub that comes in handy for children or dogs. Enjoy unlimited hot water on demand, courtesy of the Aqua-Hot diesel-fueled hydronic heating system.



AQUA-HOT™

The ultimate on-the-road luxury, a diesel-fueled hydronic heating system delivers unlimited hot water and evenly distributes heat throughout interiors and basement.

SHOWN 40 AH FLOOR PLAN WITH ENGLISH CHESTNUT CABINETS AND ENGLISH TOFFEE INTERIOR





INTERIOR DÉCOR

Now it's time to personalize your coach. Start with our handcrafted hardwood cabinetry available in your choice of luxury finishes: Medium Alderwood, English Chestnut, English Chestnut or Cordovan.

Then, add texture with your choice of designer fabric suites: Tribeca, Sandpiper, or English Toffee. All fabrics are treated for stain resistance.

To view larger images of interior design swatches, visit tiffinmotorhomes.com.

CABINETS



MEDIUM ALDERWOOD



ENGLISH CHESTNUT



CORDOVAN

FLOORING



CARPET



TILE

ENGLISH TOFFEE FABRIC SUITE

LIVING AREA & KITCHEN



PILLOWS



VALANCE

SANDPIPER FABRIC SUITE

LIVING AREA & KITCHEN



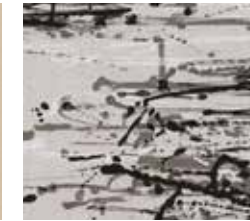
PILLOWS



VALANCE

TRIBECA FABRIC SUITE

LIVING AREA & KITCHEN



PILLOWS



VALANCE

BACKSPLASH & COUNTERTOP



BACKSPLASH & COUNTERTOP



BACKSPLASH & COUNTERTOP



BEDROOM



BEDROOM



BEDROOM



Phaeton cabinet doors & fascias are made of solid wood, & all cabinet finishes are available in combination with any fabric suite. All options may not be available in every model. Because of progressive improvements, specifications, standard & optional equipment are subject to change without notice or obligation. For a complete & up-to-date list of available options & specifications, visit tiffinmotorhomes.com.

LIVING AREA/DINETTE

STANDARD ON ALL MODELS:

- Ultra Leather Booth Dinette/Sleeper with Laminate Tabletop & Solid Surface Edging

| AVAILABLE OPTIONS: | 36 GH | 40 AH | 40 QBH | 40 QKH | 42 LH |
|---|-------|-------|--------|--------|-------|
| Dinette with Computer Workstation | O | O | O | O | O |
| Ultra Leather U-shaped Booth Dinette | O | O | O | O | O |
| Ultra Leather DE Sofa/Sleeper on Passenger Side | O | NA | S | S | S |
| Ultra Leather L-shaped Chaise Sofa/Sleeper on Passenger Side | NA | NA | O | O | NA |
| Ultra Leather Hide-A-Bed Sofa/Sleeper on Passenger Side** | NA | NA | O | O | NA |
| Ultra Leather Magic Bed on Passenger Side | NA | NA | NA | NA | O |
| Two Ultra Leather Recliners on Passenger Side | O | NA | NA | NA | O |
| Entertainment Center with One Leather Recliner & Flip Table on Passenger Side | S | NA | NA | NA | O |
| Ultra Leather DE Sofa/Sleeper on Driver Side | NA | NA | S | S | NA |
| Ultra Leather Hide-A-Bed Sofa/Sleeper on Driver Side | NA | NA | O | O | NA |
| Ultra Leather L-shaped Chaise Sofa/Hide-A-Bed on Driver Side** | S | S | NA | NA | S |
| Ultra Leather Magic Bed on Driver Side | NA | NA | O | O | NA |
| Two Ultra Leather Recliners on Driver Side*** | NA | NA | O | O | NA |
| Entertainment Center with One Leather Recliner & Flip Table on Driver Side* | NA | NA | O | O | NA |
| TV in Entertainment Center | S | NA | NA | NA | S |
| Fireplace Below TV | O | O | O | O | O |

* When Optional Entertainment Center is chosen, Pantry replaces Midsection TV. Fireplace below Living Room TV is also Optional only with this configuration.

** Option not available on both Passenger & Driver Side. For 36 GH Option on Passenger Side only available with Front Overhead TV.

*** For 36 GH Leather Recliners only available with Front Overhead TV.

KITCHEN

STANDARD ON ALL MODELS:

- Solid Surface Countertop with Stainless Steel Sink
- Solid Surface Sink Covers
- Expand-an-island
- Folding Solid Surface Cooktop Cover
- Sink Cover Storage Racks Underneath Sink
- Single Lever Sink Faucet with Sprayer
- Stainless Steel Microwave/Convection Oven
- Galley Splash Guards
- Stainless Steel Residential Refrigerator
- 3-burner Stainless Steel Cooktop
- Built-in Soap Dispenser
- Built-in Waste Can (Not Available with Dishwasher)

| AVAILABLE OPTIONS: | 36 GH | 40 AH | 40 QBH | 40 QKH | 42 LH |
|---|-------|-------|--------|--------|-------|
| Dishwasher (Deletes Built-in Waste Can) | O | O | O | O | O |

BATH

STANDARD ON ALL MODELS:

- Medicine Cabinet with Vanity Lights
- Skylight in Shower & LED Light
- Solid Surface Vanity Top & Bowl
- Solid Wood Custom Privacy Door
- 10-Gallon DSI Gas/Electric Water Heater
- 3-speed Fantastic® Fan
- Hand-held Shower Head with On/Off Switch
- Spray Cleaner on Toilet

| AVAILABLE OPTIONS: | 36 GH | 40 AH | 40 QBH | 40 QKH | 42 LH |
|------------------------------|-------|-------|--------|--------|-------|
| 36" Radius Shower Surround | S | NA | S | S | S |
| 41" Molded Fiberglass Shower | NA | S | NA | NA | NA |
| Tub (in Place of Shower) | NA | NA | NA | O | NA |

BEDROOM

STANDARD ON ALL MODELS:

- Bed Comforter with Throw Pillows
- Pre-wired for DVD & Satellite Receiver
- DVD Player in Bedroom with Surround Sound
- Under Bed Storage
- Pillow Top Mattress
- Ceiling Fan
- TV
- Direct TV® Receiver (Requires Subscription)
- Carbon Monoxide Detector
- Wood/Fabric Headboard
- LPG Leak Detector
- Chest of Drawers with Laundry Hamper

| AVAILABLE OPTIONS: | 36 GH | 40 AH | 40 QBH | 40 QKH | 42 LH |
|---|-------|-------|--------|--------|-------|
| Bunk Beds with Bunk Ladder/Convertible Wardrobe | NA | NA | NA | S | NA |
| DVD Monitors in Bunk Beds | NA | NA | NA | O | NA |
| King Bed Mattress (72" x 80") | NA | O | O | O | O |
| Air Comfort Mattress – Queen (60" x 80") | O | O | O | O | O |
| Air Comfort Mattress – King (72" x 80") | NA | O | O | O | O |
| Memory Foam Queen Mattress (60" x 80") | O | O | O | O | O |
| Memory Foam King Mattress (72" x 80") | NA | O | O | O | O |

WARRANTY

You won't find a better warranty because you won't find a better-built coach.

The Tiffin Five-Star Warranty.
The best in the business, bar none.



At Tiffin Motorhomes, we build for quality first and foremost, limiting our production to just 12 coaches a day to ensure meticulous craftsmanship. It may not be the most business-savvy way to run a company but it is the best way. By investing the time and effort to do things right, we want you, as a Tiffin owner, to have the utmost confidence in your coach, as well as a peace of mind you won't find with other manufacturers. You see, not only do we stand proudly behind our product, we stand behind you as well.

★ 10

YEAR
CONSTRUCTION
WARRANTY

The structural integrity of the welded frame of entire coach is warranted for 10 years.

★ 5

YEAR
DELAMINATION
WARRANTY

We guarantee against all exterior fiberglass delamination or wall separation for 5 years.

★ 1

YEAR
COMPREHENSIVE
WARRANTY

Your coach is warranted against defects in materials and workmanship for 12 months, or 12,000 miles of use.

★ 1

YEAR
COACH ROADSIDE
SERVICES

Available through Coach-Net, the country's largest RV emergency road service, this program provides 24/7 access to responsive roadside and technical assistance.

★ Ongoing
Owner
Support

No other motorhome company can compare with Tiffin's exceptional customer service. Email us at service@tiffinmotorhomes.com or call us at 256/356.0261.

EXTERIOR DÉCOR
FULL-BODY PAINT SCHEMES



EMERALD SPRUCE



RUSTIC CANYON



MAROON CORAL



SUNLIT SAND



NASA

PREMIUM PAINT SYSTEM

Our eight-step full-body paint system features premium grade BASF paints sealed with four layers of superclear coat with ultraviolet protection. An additional layer of scratch-resistant plastic coating protects the front of the coach, stairwell, and entry door lock.

TAKE A CLOSER LOOK AT OUR PAINT SYSTEM IN ACTION





POWER CORD REEL & POWER CORD HOSE



EXTERIOR TV



FLUSH MOUNTED DUAL PANE WINDOWS

SPECIFICATIONS

AUTOMOTIVE

STANDARD ON ALL MODELS:

- Raised Rail Chassis Frame
- Air Ride 4 Air Bags up to 40', 6 Air Bags on 42'
- Aluminum Wheels
- Exhaust Brake (36' & 40')
- Compression Brake (42')
- Adjustable Accelerator & Brake Pedals
- Allison 3000 MH 6-speed Automatic Transmission
- Air Brakes with Automatic Slack Adjusters & ABS
- 55" Wheel Cut
- Fog Lights
- Daytime Running Lights
- 18" VIP Steering Wheel
- Cruise Control
- Emergency Start Switch

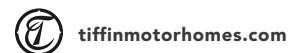
CHASSIS OPTIONS

| FREIGHTLINER® CHASSIS: | 36 GH | 40 AH | 40 QBH | 40 QKH | 42 LH |
|--|-----------|-----------|-----------|-----------|-----------|
| Freightliner Cummins ISL 380 HP/1050 lb Torque | S | S | S | S | NA |
| Freightliner Cummins ISL 450 HP/1250 lb Torque | NA | NA | NA | NA | S |
| GVWR | 35,320 lb | 35,320 lb | 35,320 lb | 35,320 lb | 44,320 lb |
| GAWR – Front | 14,320 lb | 14,320 lb | 14,320 lb | 14,320 lb | 14,320 lb |
| GAWR – Rear | 21,000 lb | 21,000 lb | 21,000 lb | 21,000 lb | 20,000 lb |
| GAWR – Tag Axle | NA | NA | NA | NA | 10,000 lb |
| GCWR | 45,320 lb | 45,320 lb | 45,320 lb | 45,320 lb | 54,320 lb |
| Alternator Amps | 160 | 160 | 160 | 160 | 160 |
| Trailer Hitch Capacity | 10,000 lb | 10,000 lb | 10,000 lb | 10,000 lb | 10,000 lb |
| Fuel Tank (Gallons) – Dual Fuel Fill | 100 | 100 | 100 | 100 | 100 |
| DEF Tank* (Gallons) | 13 | 13 | 13 | 13 | 13 |

*Diesel Exhaust Fluid (DEF) is the active component used in Selective Catalytic Reduction (SCR) engines to reduce nitrogen oxide emissions by 90% to meet EPA standards.

WEIGHTS & MEASURES

| OVERALL: | 36 GH | 40 AH | 40 QBH | 40 QKH | 42 LH |
|--|-------------|-------------|-------------|-------------|-------------|
| Overall Length (Approximate) | 36' 9" | 40' 5" | 40' 5" | 40' 5" | 42' 6" |
| Overall Height with Roof Air (Maximum) | 12' 7" | 12' 7" | 12' 7" | 12' 7" | 12' 7" |
| Interior Height | 84" | 84" | 84" | 84" | 84" |
| Overall Width | 101" | 101" | 101" | 101" | 101" |
| Interior Width | 96" | 96" | 96" | 96" | 96" |
| Fresh Water (Gallons) | 90 | 90 | 90 | 90 | 90 |
| Black Water (Gallons) | 50 | 50 | 50 | 50 | 50 |
| Grey Water (Gallons) | 66 | 66 | 66 | 66 | 66 |
| LPG Tank (Gallons; can only be filled to 80% capacity) | 35.7 | 35.7 | 35.7 | 35.7 | 35.7 |
| Basement Storage (Cubic Feet – Approximate) | 111 | 157 | 157 | 157 | 152 |
| Wheel Base | 228" | 266" | 266" | 266" | 272" |
| Tire Size | 275/80R22.5 | 275/80R22.5 | 275/80R22.5 | 275/80R22.5 | 275/80R22.5 |
| Minimum Garage Height | 13' | 13' | 13' | 13' | 13' |



All options may not be available in every model. Because of progressive improvements, specifications, standard & optional equipment are subject to change without notice or obligation. For a complete & up-to-date list of available options & specifications, as well as information on Tiffin's full line of motorhomes, visit tiffinmotorhomes.com or scan the QR Code with your Smart Phone.



SPECIFICATIONS

GENERAL EXTERIOR

STANDARD ON ALL MODELS:

- Hydraulic Automatic Leveling Jacks
- Large Tinted One-piece Windshield
- Heated Power Mirrors with Integrated Cameras
- Single Motor Intermittent Wiper
- Lockable Swing-out Storage Doors with Gas Shocks
- Window Awning Package (2 Windows)
- BASF Full-body Paint with Protective Film on Front Cap
- Foil Wrap Insulation Barrier
- Remote Locking System for Entry Door
- Heated Water & Holding Tank Compartments
- Chrome Handles on Compartment Doors
- Deadbolt Front Entrance Door
- Double Electric Step
- Flush Mounted & Painted-frame Dual Pane Windows
- Exterior Patio LED Light
- Automatic Door Awning
- Metal Wrapped Automatic Patio Awning
- Motion Sensor Lighting for Exterior Storage
- 10.0 kw Onan® Manual Slide-out Generator
- Electric Hose Reel
- Electric Power Cord Reel
- Fiberglass Front & Rear Caps
- Docking Lights
- Six 6 V Auxiliary Batteries
- Black Tank Flush System
- Water Filter
- Custom Mud Flap
- Undercoating
- Dual Fuel Fills
- 110 V Exterior Receptacle
- Digital TV Antenna
- Back-up Camera
- Cable TV Ready Hook-up
- Gravity Water Fill
- 2000 Watt Sine Wave Inverter with 100 Amp Converter & Transfer Switching
- Pre-wired for In-motion or Automatic Satellite Dish*
- Roof Ladder

| AVAILABLE OPTIONS: | 36 GH | 40 AH | 40 QBH | 40 QKH | 42 LH |
|--|-------|-------|--------|--------|-------|
| One Storage Compartment Slide-out Tray | O | O | O | O | O |
| Two Storage Compartment Slide-out Trays | NA | O | O | O | O |
| Air Horns | O | O | O | O | O |
| In-motion Satellite Dish* | O | O | O | O | O |
| Pre-wired for Winegard Trav'ler Satellite | O | O | O | O | O |
| Exterior TV | O | O | O | O | O |
| Two Low Profile Roof ACs with Heat Pumps | S | NA | NA | NA | NA |
| Three Low Profile Roof ACs with Heat Pumps | NA | S | S | S | S |
| Aqua-Hot™ & All Electric Coach | O | O | O | O | O |

*High-definition programming is not available on a domed satellite antenna unless you subscribe to DISH Network®

GENERAL INTERIOR

STANDARD ON ALL MODELS:

- 7' Ceilings
- Soft Touch Vinyl Ceiling with Trey Ceiling in Living Area
- Porcelain Tile Floor Throughout Coach
- Treated Carpet in Slide-outs
- High Gloss Raised Panel Hardwood Cabinet Doors
- Two Ducted Furnaces
- Solid Wood Cabinet Fascias & Doors with Concealed Hinges
- Complete Cable Wiring (Interfacing with Surround Sound & Satellite System)
- Home Theater Sound System with Concealed Speakers
- Direct TV® Receiver (Requires Subscription)
- Chainless Solar & Privacy Shades
- LED Lighting
- Fantastic® Power Roof Vents with 3-speed Fans
- Tank Level Monitor System
- Smoke Detector
- Electric Step Well Cover
- Wardrobe with Automatic Light
- 12 V Disconnect Switch
- Extraordinaire™ AC System

| AVAILABLE OPTIONS: | 36 GH | 40 AH | 40 QBH | 40 QKH | 42 LH |
|--|-------|-------|--------|--------|-------|
| Medium Alderwood Solid Cabinet Doors & Drawer Fronts | O | O | O | O | O |
| English Chestnut Solid Cabinet Doors & Drawer Fronts | O | O | O | O | O |
| Cordovan Solid Cabinet Doors & Drawer Fronts | O | O | O | O | O |
| All Electric Coach | O | O | O | O | O |
| Stacked Washer/Dryer | O | O | O | O | O |
| Central Vacuum Cleaner | O | O | O | O | O |
| Heated Tile Floor | O | O | O | O | O |

COCKPIT

STANDARD ON ALL MODELS:

- Power Ultra Leather Driver & Passenger Seats with Passenger Footrest
- Contemporary Wraparound Dash
- Courtesy Drawer in Step Well
- Courtesy Light in Step Well
- Dual Dash Fans
- Two Drawers in Dash
- Dual 12 V Dash Receptacle
- Single CD Player & AM/FM Stereo
- USB Dash Receptacle
- Computer Slide-out Tray with Lock-out Rails on Passenger Side
- Power Solar & Privacy Windshield Shade
- Driver/Passenger Side Window Solar & Privacy Shades
- Color Rear Vision Monitor System with Side-view Cameras Activated by Turn Signals
- Satellite-ready Radio Includes Receiver & Antenna (Requires Subscription)
- Integrated Seatbelt Brackets
- Fire Extinguisher

| AVAILABLE OPTIONS: | 36 GH | 40 AH | 40 QBH | 40 QKH | 42 LH |
|---------------------------|-------|-------|--------|--------|-------|
| Front Overhead TV | O | O | O | O | O |
| In-dash Navigation System | O | O | O | O | O |



A family business built around yours.

Tiffin Motorhomes is proud to be one of the few family-owned manufacturers in the industry, and it makes a significant difference in how our company operates versus our competitors. For starters, with the Tiffin name on every coach, building a superior motorhome isn't just our occupation. It's a matter of personal pride, a pursuit we have committed our lives to perfecting.

Since we don't have shareholders looking over our shoulder, the only people we focus on making happy are folks like you. All the decisions we make, from using better parts to offering more thoughtful floor plans than anyone else, are based on what will result in a better motorhome, not a better dividend check. In fact, some decisions, like limiting production to 12 coaches a day to ensure quality craftsmanship, probably wouldn't sit too well with a corporate board of directors.

Also, when we say family-owned, that means family-operated, too. Tim Tiffin has been our General Manager for more than a decade, guiding the overall direction of our company. Van Tiffin oversees innovations as head of Research & Development, and Lex Tiffin's work with Supplier Relations helps us maintain our high standards. Of course, everyone knows our founder Bob, who is in the RV Industry Association's Hall of Fame and is still the first one at the plant every morning at 5:00 a.m.

As a family running a motorhome company, we understand families who own motorhomes. We know it's not just about where a coach will take you, but the experience you take from the journey. That's why every Tiffin motorhome is made to move you.

LEFT TO RIGHT: TIM TIFFIN, VAN TIFFIN,
BOB TIFFIN, AND LEX TIFFIN

GO TO TIFFINMOTORHOMES.COM

Visit us on the web for more information on the 2015 Phaeton and all 2015 Tiffin Motorhomes, along with the latest product and specification updates. Plus, watch videos and see other exclusive web content. You can also follow us on Facebook and Twitter.

FOR PARTS & SERVICE CALL [256/356.0261](tel:2563560261)

 [FACEBOOK.COM/TIFFINMOTORHOMES](https://www.facebook.com/tiffinmotorhomes)

 [TWITTER.COM/TIFFINMOTORHOME](https://twitter.com/tiffinmotorhome)

YOUR LOCAL TIFFIN DEALER:

